

ROAD TRIP SCAVENGER HUNT



SOMETHING THAT
STARTS WITH THE
LETTER OF YOUR NAME



A RED CAR



SOMETHING THAT
MOVES FAST



WORKMEN WORKING
ON THE ROAD



A CAMPERVAN



A CAR WITH A
ROOFRACK



A DOG



A TRUCK



ANIMALS GRAZING



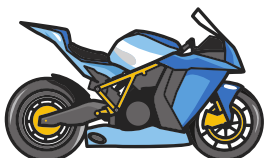
THE SAME CAR/ VAN AS
YOURS (ANY COLOUR)



A MOTORBIKE



POLICE CAR



DIFFICULTY: EASY



ROAD TRIP SCAVENGER HUNT



A PLANE



A TRAFFIC CONE



A WINDMILL



A HORSE



A TRUCK



A SPEED LIMIT SIGN



A GAS PUMP



A BLUE CAR



AMBULANCE



TRAFFIC LIGHTS



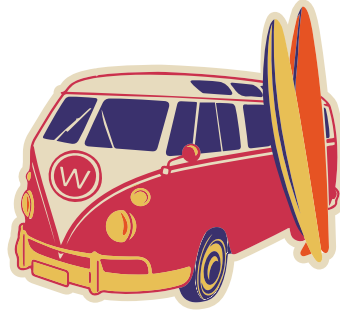
A POLICE CAR



A FIELD



THE ROAD TRIP EXPERT



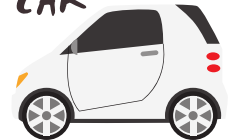
ROAD TRIP SCAVENGER HUNT



A MOTOR CYCLE WITH A
PASSENGER ON THE
BACK



A WHITE CAR



SOMETHING ROUND



A RED CAMPERVAN



A MOTEL



A REST STOP



A PLAYGROUND



FAST FOOD PLACE



A HILL



SOMEONE SLEEPING



A SHOPPING MALL



SIRENS





ROAD TRIP SCAVENGER HUNT



SOMETHING THAT
STARTS WITH THE
LETTER OF YOUR NAME



A FLAG



A BRIDGE



A TALL BUILDING



A TRUCK



A BENCH



MOTORCYCLE



DOG IN A CAR



FIRE TRUCK



STOP SIGN



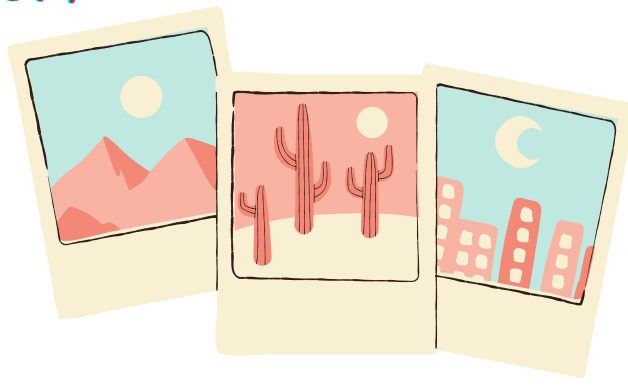
STATUE



A BIRD ON A STREET
LIGHT



DIFFICULTY: MEDIUM



ROAD TRIP SCAVENGER HUNT



CATTLE TRUCK



AN S.U.V / PICKUP



A LAKE



A LOGGING TRUCK



A FOOD BILLBOARD



A WELCOME SIGN



A TOLL STATION



A CHURCH



VW CAMPER VAN



FLOWERS



A TUNNEL




A CONVERTABLE



THE ROAD TRIP EXPERT

DIFFICULTY: MEDIUM



ROAD TRIP SCAVENGER HUNT



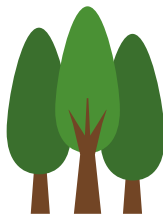
A STOP SIGN



A GO SIGN



A FOREST



A WORK VAN



A TRUCK DELIVERING
FOOD



A PERSON SINGING IN
THEIR CAR



A ROAD CLOSED SIGN



A FOR SALE SIGN



SAME CAR AS YOU/
SAME COLOR



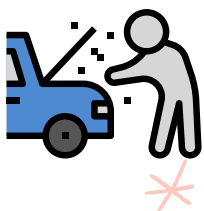
A BLACK VW BUG



SOMEBODY BROKEN
DOWN

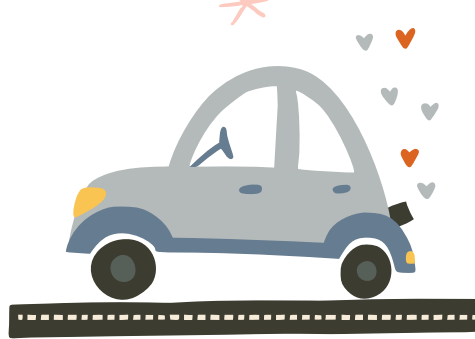


A RECOVERY TRUCK



THE ROAD TRIP EXPERT

DIFFICULTY: HARD



ROAD TRIP SCAVENGER HUNT

- | | |
|---|---|
|  A TRUCK DELIVERING FOOD |  A PERSON SINGING IN THEIR CAR * |
|  A STOP SIGN |  A GO SIGN |
|  A FOREST |  A WORK VAN |
|  A SAME TYPE/SAME COLOR CAR AS YOU |  A PARK PENCH |
|  A ROAD CLOSED SIGN |  A FOR SALE SIGN |
|  A CATTLE TRUCK |  A BLACK VW BUG * |
|  SOMEBODY BROKEN DOWN |  A PERSON SLEEPING |
|  WALMART |  A RIVER |
|  A BROWN FENCE * |  A WENDY'S |
|  A LAKE |  A RECOVERY TRUCK |



THE ROAD TRIP EXPERT

DIFFICULTY: HARD



ROAD TRIP SCAVENGER HUNT



A TRUCK CARRYING
CARS



A PERSON SINGING IN
THEIR CAR *



A RED STOP SIGN



FAST FOOD PLACE



A FOREST



A MACDONALDS



A SAME TYPE/SAME
COLOR CAR AS YOU



A PARK BENCH



A TOURIST ATTRACTION



A FOR SALE SIGN



A CATTLE TRUCK



A BLUE VW BUG *



SOMEBODY BROKEN
DOWN



A PERSON SLEEPING



WALMART



REST STOP



A PLAYGROUND *



A WENDY'S



A LAKE



A RECOVERY TRUCK



THE ROAD TRIP EXPERT



ROAD TRIP SCAVENGER HUNT

FIND, COLLECT, DO



FIND SOMETHING THAT
STARTS WITH THE
LETTER OF YOUR NAME



TAKE A PICTURE OF A
WILD ANIMAL



A VIDEO OF EVERYBODY
SINGING IN THE CAR



A LOCAL TOUR LEAFLET



SOMETHING THAT
TASTES AMAZING



A BEAUTIFUL LEAF AT
ONE OF YOUR SCENIC
REST STOPS



GET A PICTURE OF THE
WHOLE FAMILY NEXT TO
THE CAR



TAKE A PICTURE OF AN
AMAZING VIEW



FIND SOMETHING THAT
STARTS WITH THE
LETTER R



A SOUVENIR UNDER
\$1



GIVE A TIP TO A LOVELY
SERVER



SOMEONE WHO LOOKS
LIKE YOU

